

ETFA Antibody (Center)
Purified Rabbit Polyclonal Antibody (Pab)
Catalog # AP20630c**Specification**

ETFA Antibody (Center) - Product Information

| | |
|-------------------|------------------------|
| Application | IF, WB,E |
| Primary Accession | P13804 |
| Other Accession | Q8HXY0 |
| Reactivity | Human, Mouse |
| Predicted | Monkey |
| Host | Rabbit |
| Clonality | Polyclonal |
| Isotype | Rabbit IgG |
| Calculated MW | 35080 |

ETFA Antibody (Center) - Additional Information**Gene ID** 2108**Other Names**

Electron transfer flavoprotein subunit alpha, mitochondrial, Alpha-ETF, ETFA

Target/Specificity

This ETFA antibody is generated from a rabbit immunized with a KLH conjugated synthetic peptide between 192-226 amino acids from the Central region of human ETFA.

Dilution

IF~~1:25

WB~~1:1000

E~~Use at an assay dependent concentration.

Format

Purified polyclonal antibody supplied in PBS with 0.09% (W/V) sodium azide. This antibody is purified through a protein A column, followed by peptide affinity purification.

Storage

Maintain refrigerated at 2-8°C for up to 2 weeks. For long term storage store at -20°C in small aliquots to prevent freeze-thaw cycles.

Precautions

ETFA Antibody (Center) is for research use only and not for use in diagnostic or therapeutic procedures.

ETFA Antibody (Center) - Protein Information**Name** ETFA

Function Heterodimeric electron transfer flavoprotein that accepts electrons from several mitochondrial dehydrogenases, including acyl-CoA dehydrogenases, glutaryl-CoA and sarcosine dehydrogenase (PubMed:[10356313](#), PubMed:[15159392](#), PubMed:[15975918](#), PubMed:[27499296](#), PubMed:[9334218](#)). It transfers the electrons to the main mitochondrial respiratory chain via ETF-ubiquinone oxidoreductase (ETF dehydrogenase) (PubMed:[9334218](#)). Required for normal mitochondrial fatty acid oxidation and normal amino acid metabolism (PubMed:[12815589](#), PubMed:[1430199](#), PubMed:[1882842](#)).

Cellular Location

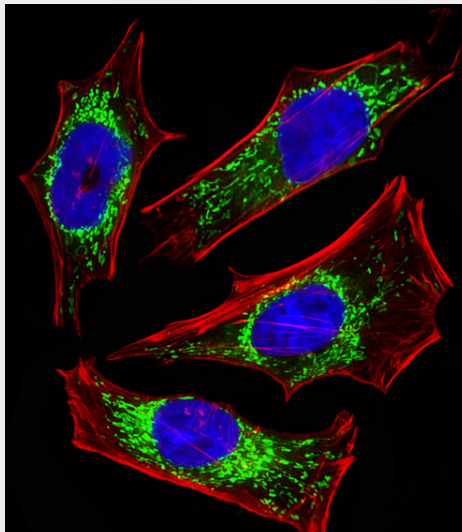
Mitochondrion matrix.

ETFA Antibody (Center) - Protocols

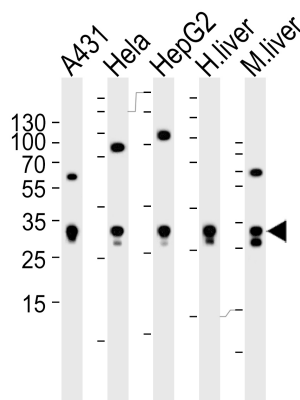
Provided below are standard protocols that you may find useful for product applications.

- [Western Blot](#)
- [Blocking Peptides](#)
- [Dot Blot](#)
- [Immunohistochemistry](#)
- [Immunofluorescence](#)
- [Immunoprecipitation](#)
- [Flow Cytometry](#)
- [Cell Culture](#)

ETFA Antibody (Center) - Images



Fluorescent image of HeLa cells stained with ETFA Antibody (Center)(Cat#AP20630c). AP20630c was diluted at 1:25 dilution. An Alexa Fluor 488-conjugated goat anti-rabbit IgG at 1:400 dilution was used as the secondary antibody (green). DAPI was used to stain the cell nuclear (blue). Cytoplasmic actin was counterstained with Alexa Fluor® 555 conjugated with Phalloidin (red).



Western blot analysis of lysates from A431, HeLa, HepG2 cell line, human liver and mouse liver tissue lysate (from left to right), using ETFA Antibody (Center) (Cat. #AP20630c). AP20630c was diluted at 1:1000 at each lane. A goat anti-rabbit IgG H&L (HRP) at 1:5000 dilution was used as the secondary antibody. Lysates at 35 µg per lane.

ETF A Antibody (Center) - Background

The electron transfer flavoprotein serves as a specific electron acceptor for several dehydrogenases, including five acyl-CoA dehydrogenases, glutaryl-CoA and sarcosine dehydrogenase. It transfers the electrons to the main mitochondrial respiratory chain via ETF-ubiquinone oxidoreductase (ETF dehydrogenase).

ETF A Antibody (Center) - References

Finocchiaro G., et al. J. Biol. Chem. 263:15773-15780 (1988).
Olsen R.K.J., et al. Hum. Mutat. 22:12-23 (2003).
Kalnina N., et al. Submitted (AUG-2003) to the EMBL/GenBank/DDBJ databases.
Ota T., et al. Nat. Genet. 36:40-45 (2004).
Zody M.C., et al. Nature 440:671-675 (2006).